

# Super Pro DAC 707 (2009 Version)

## User Manual

Congratulations on purchasing the new Super Pro Dac 707. This upgraded version features many improvements over the previous version. Just some of them include:

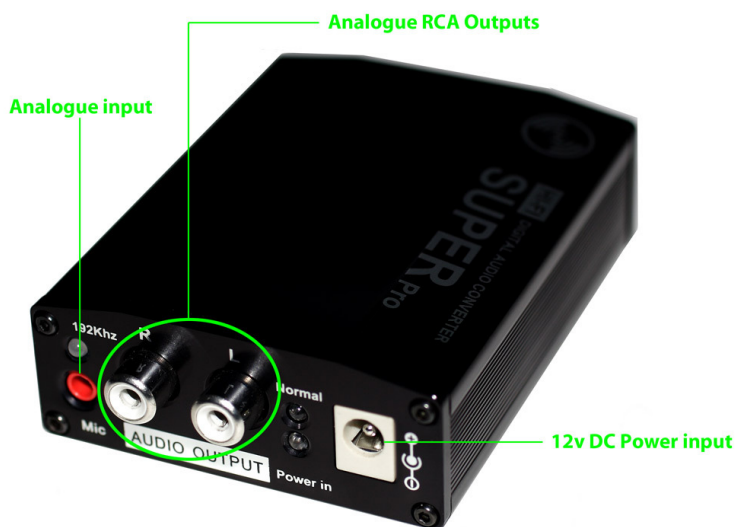
- \* A new, stronger and more attractive case
- \* Various circuit tweaks
- \* Rhodium plated RCA sockets

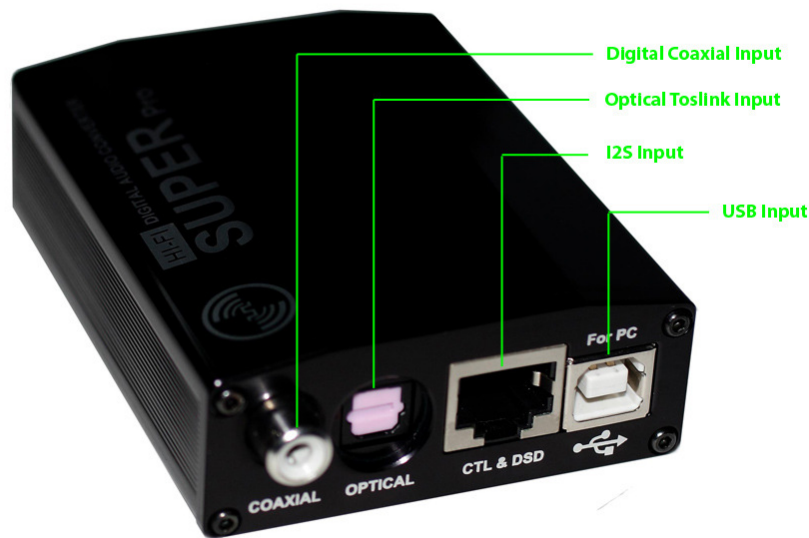
Featuring an I2S and USB input, the DAC 707 is sure to be

When connected up to a PC via its USB port, the DAC 707 converts the digital data stream from the USB input directly into I2S and straight onto the DAC chip. This bypasses the inferior SPDIF digital audio data stream format entirely and should almost eliminate jitter, thereby improving sound quality.

## FEATURES

- Cirrus CS-8416 Receiver chip,
- Cirrus CS-4398 D/A converter chip (24-192KHZ )
- Dual LT1364C OPAMPS for analog output circuit
- Optical digital toslink input
- Coaxial Digital Input
- I2S Input
- USB input (CM-108 USB receiving chip)





## Quick SETUP Guide

The DAC 707 is capable of receiving digital audio in four different Formats:

- Via its digital coaxial (RCA) input
- Via its optical toslink input
- Via its I2S input
- Via its USB input

The source of this digital audio could be a CD player, CD transport, DVD player, DAB radio receiver, most PCs / Macs and many, many other gadgets which output a digital audio signal.

## OPERATION

Please switch OFF or disconnect power to all devices in your system before making input and output connections to the DAC 707.

Plug the supplied 12v PSU into the DAC (don't switch on the mains just yet)

Connect a Digital INPUT from your source using any or all of the following:

- Digital coaxial (RCA) input
- Optical toslink input
- I2S input
- USB input

Via an interconnect cable, connect the L&R RCA stereo outputs from the DAC into the RCA input jacks of an amplifier.

Turn on mains to power up the DAC and switch on the other attached audio components.

Some of the LEDs on rear panel of the DAC will illuminate to indicate power and input signal.

Playback audio on the digital playback device. Enjoy the music..



**Using the DAC 707 with a PC or Mac through the USB input**

## Please note:

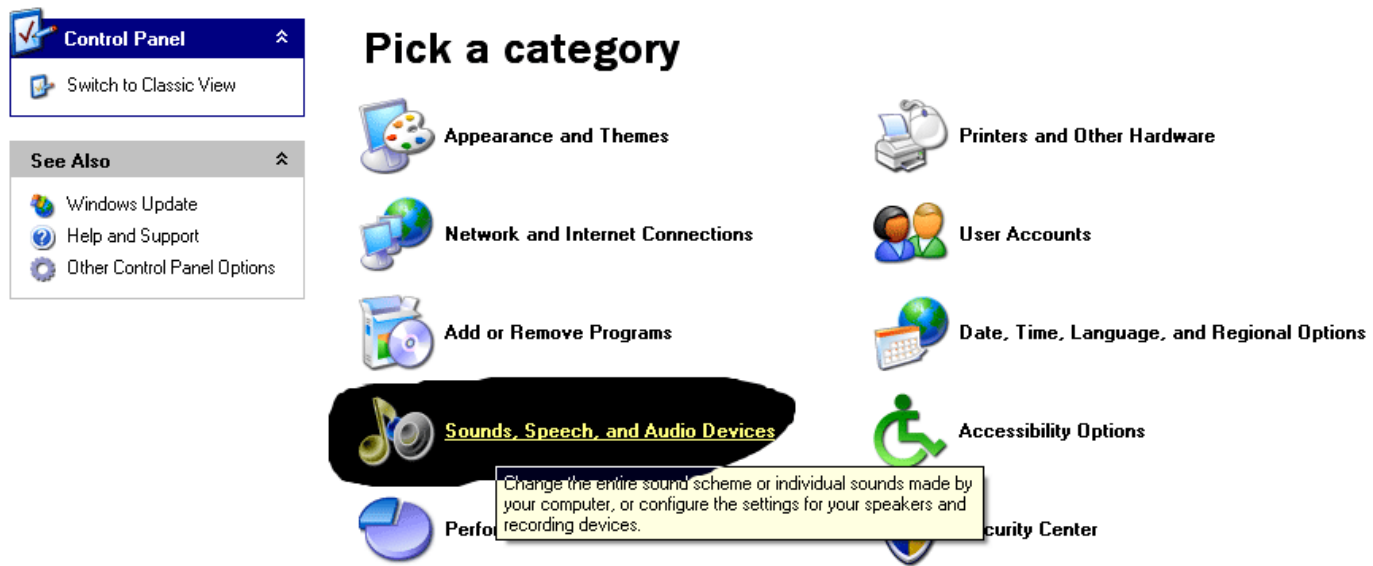
**When the DAC is connected up to a computer via USB, half its power requirements are met by the USB port and half by the supplied 12v DC power supply.**

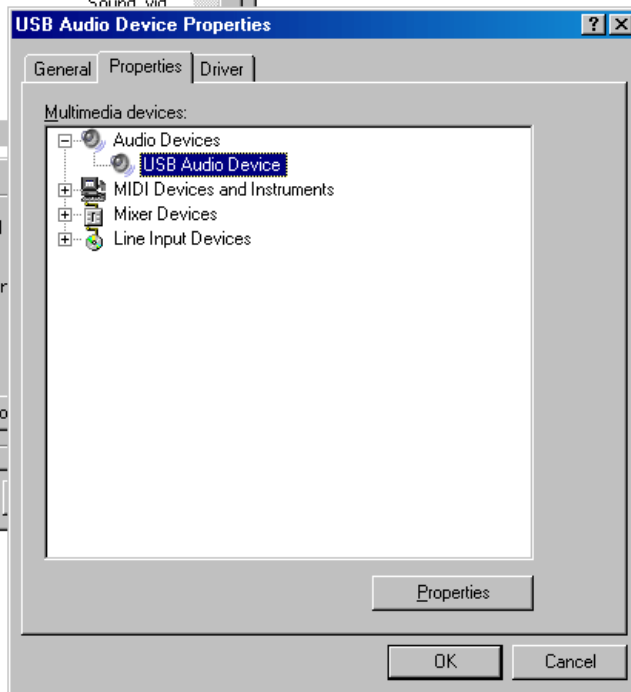
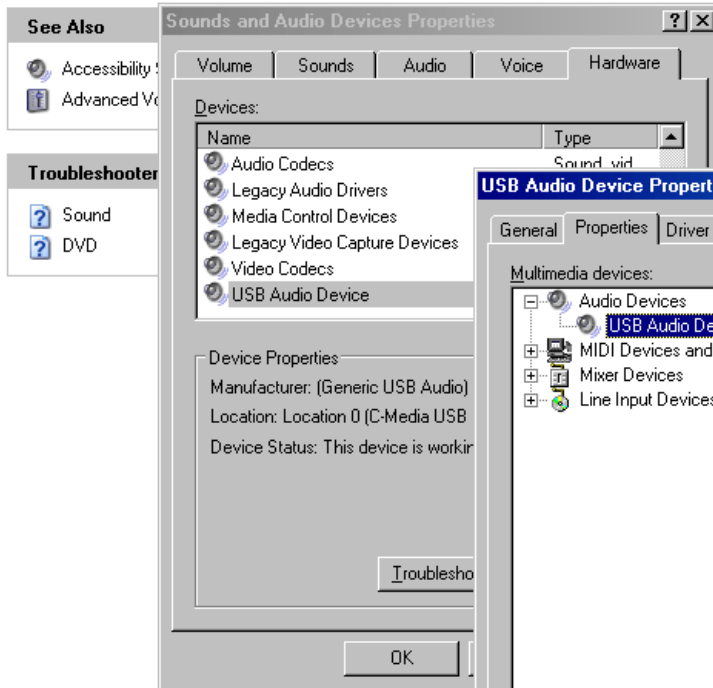
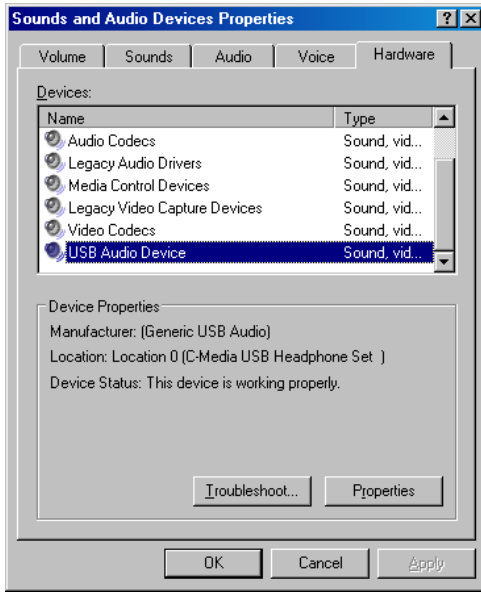
**If the DAC is only plugged into the USB and the 12v DC power supply is not connected, some LED lights on the DAC will illuminate but no sound will come from the DACs analogue RCA outputs.**

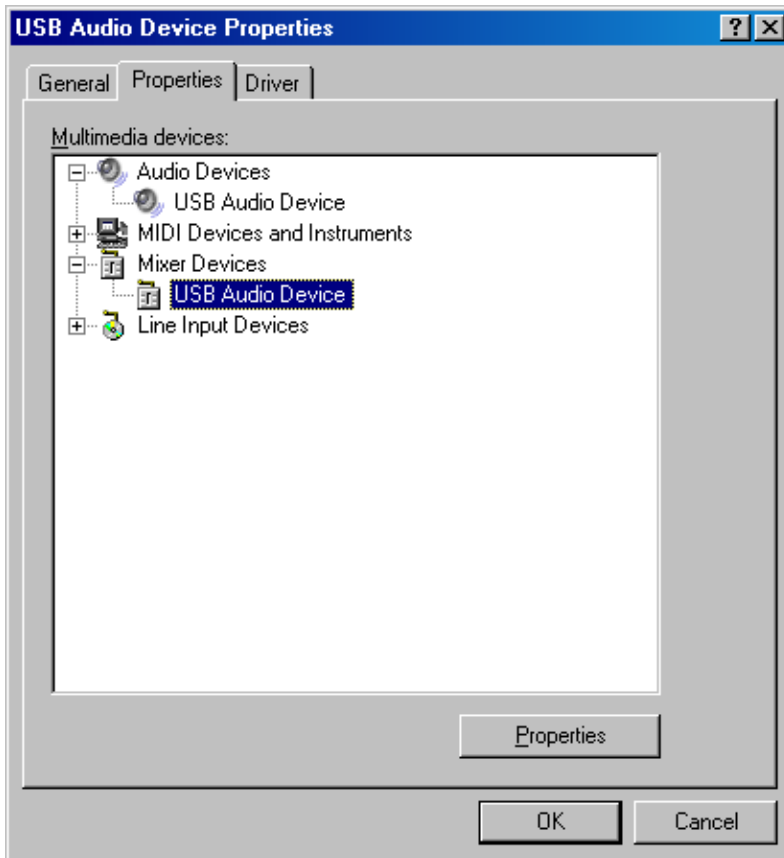
Upon plugging the DAC 707 into a PC, it should automatically be recognised.

**Using Windows XP**, to get the most out of the DAC, I personally set my computer up as follows to avoid windows beeps and annoying web audio:

Go into the windows “Control Panel”



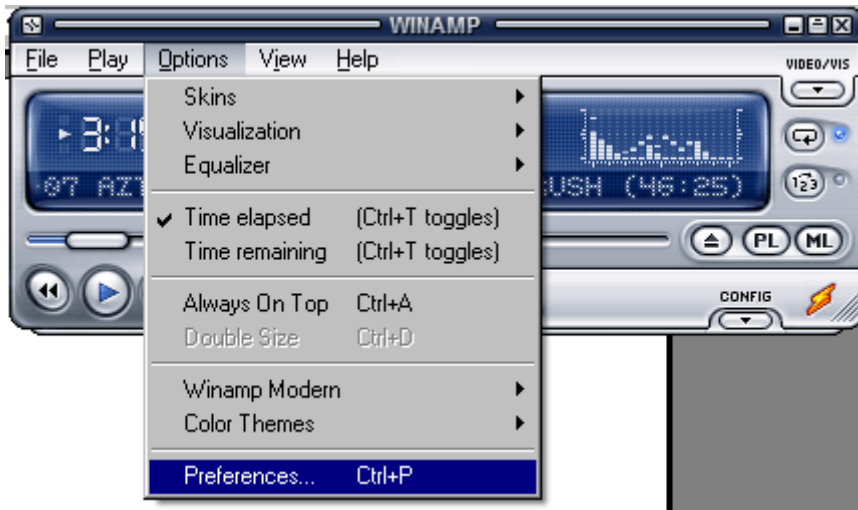


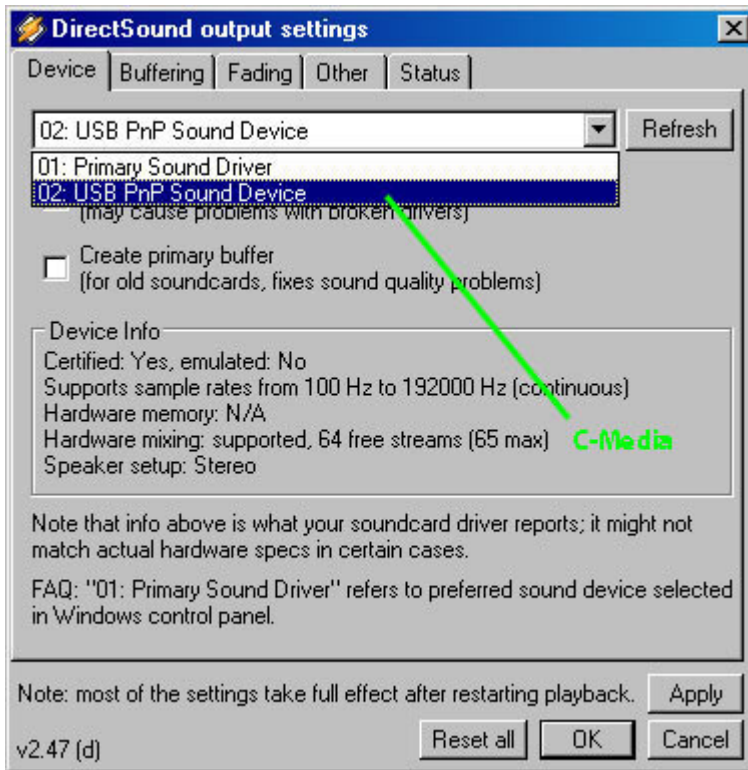
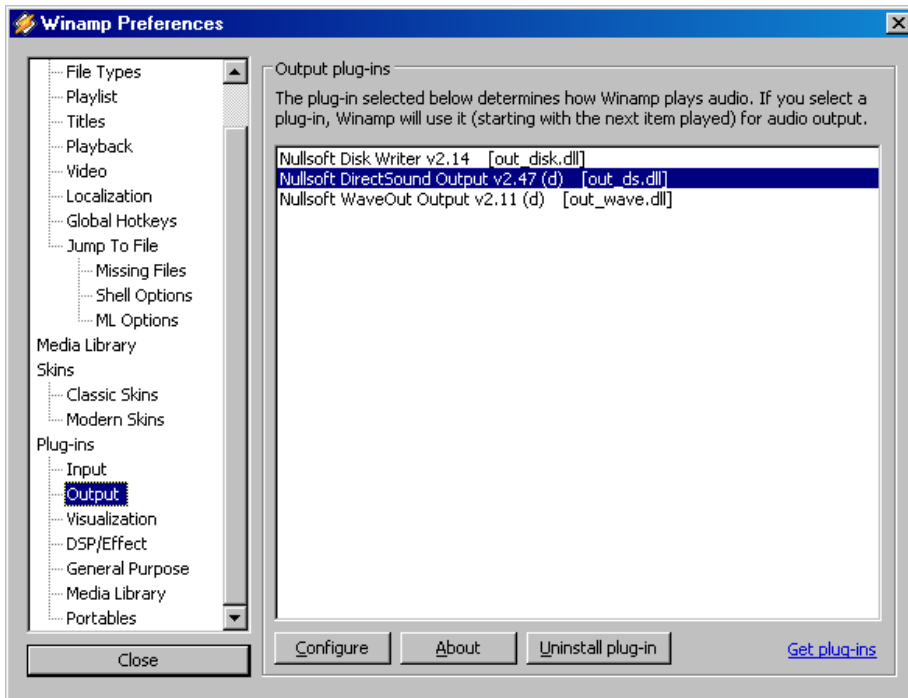




Reboot computer

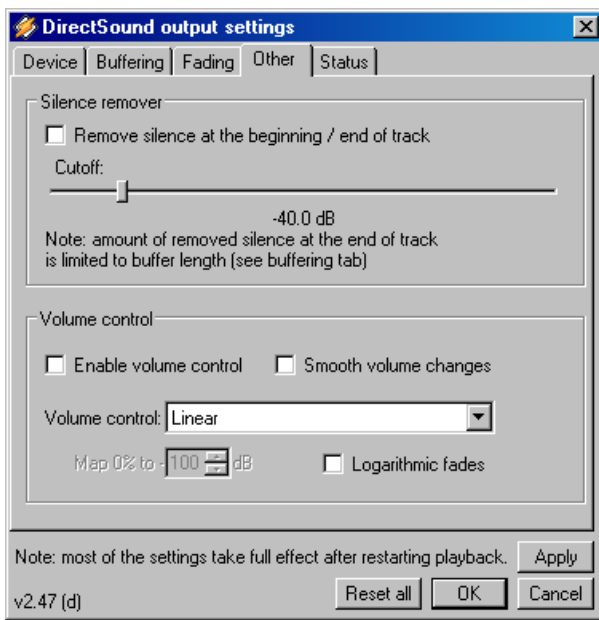
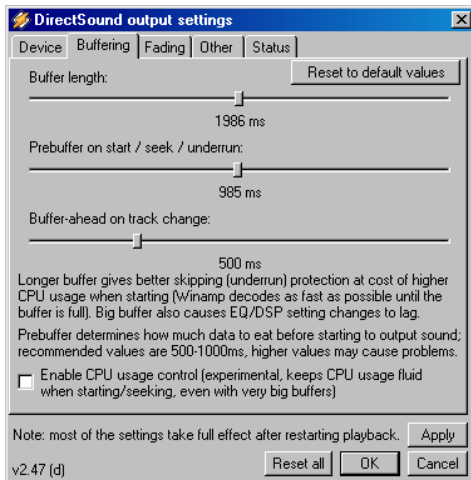
If you are running Winamp, go to options->Preferences->Plugins : output->Nullsoft Directsound output->C-Media headset->Play around with the “Buffering” section and “Other” sections.





Choose the “C-Media USB Headset” option (I’m using a driver called USB pnP Sound Device on my computer)





**This is not an official PopPulse User Manual. It's the work of:**

[www.luckyfrogaudio.co.uk](http://www.luckyfrogaudio.co.uk)